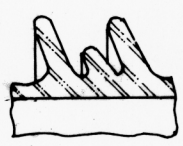
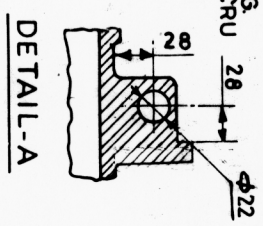
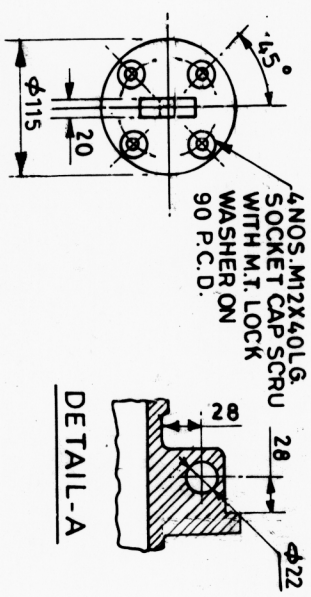
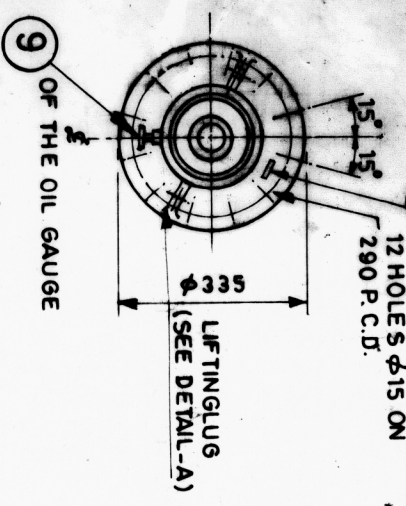
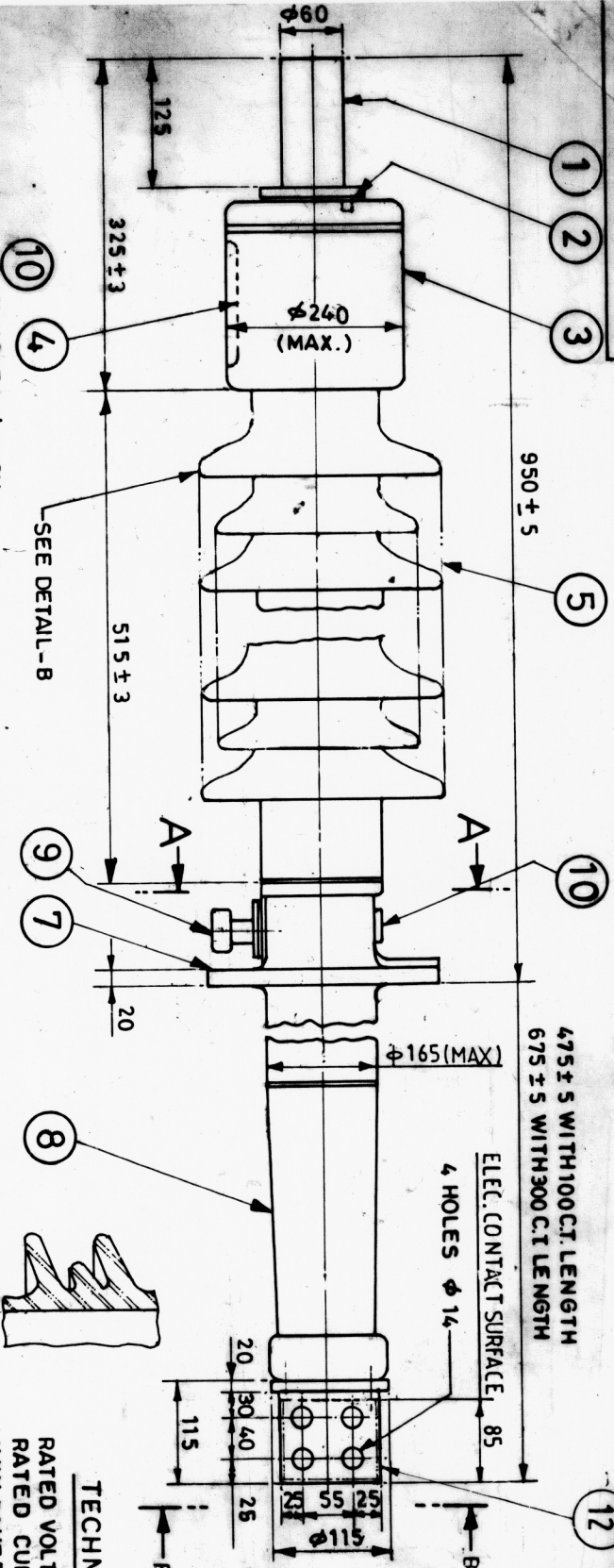


6 901-E-33B ON 9RD

(ALL DIMENSIONS ARE IN MM.)



IT	DESCRIPTION	MATERIAL	QTY
1	TOP TERMINAL	COPPER	1
2	FLUORIC RING	MT STEEL	1
3	TOP CAP	AL. ALLOY	1
4	OIL LEVEL GAUGE	TOUGHENED GLASS	1
5	PORCELAIN INSULATOR (BROWN GLAZED)	PORCELAIN	1
6	PORTING FLANGE	AL. ALLOY	1
7	BOTTOM PORCELAIN (BROWN GLAZED)	PORCELAIN	1
8	TEST TAP	AL. ALLOY	1
9	RATING PLATE	AL. ANODISED	1
10	SOCKET CAP SCREW	STEEL	1
11	WASHER	STEEL	1
12	BOTTOM TERMINAL	COPPER FORGING	1

TECHNICAL DETAILS

RATED VOLTAGE 52 KV
RATED CURRENT 2000/3150A
1MIN. 50HZ DRY, WET WITH STAND
LIGHTNING IMPULSE 1-2/50 μ SEC. FULL 250KV P
WAVE
RATED FREQUENCY 50 HZ
STANDARD APPLICABLE IS:2099/IEC187
MINIMUM CREEPAGE DISTANCE 1300 MM.
APPROX. OIL QTY. 6.5 LITRES
INSTALLATION ANGLE FROM VERTICAL 30° MAX.
TRANSPORTATION ANGLE OF HORIZONTAL 15° MIN.
TYPE: OUTDOOR OIL IMMERSED BUSHING

ITEM	WEIGHT IN KG
ITEM 1	2000 A
ITEM 2	75.0
ITEM 3	85.0
ITEM 4	95.0

REV	DATE	ALT.	CHD.	REV	DATE	ALT.	CHD.
07	3-4-97			03	30-3-91		
06	23-11-95			02	25-8-87		

ITEM 005 TOP PORCELAIN WAS ANTI FOG SHED & TABLE OF WEIGHT ADDED.

ITEM 006 (AIR RELEASE) DIM. 55 FOR ELEC. CONTACT SURFACE.

ITEM 007 (DRAIN PLUG) DELETED.

ITEM 008 (CONTACT SURFACE) DELETED.

DEPT	GRADE	SCALE	WEIGHT (KG)	SEE TABLE	PER TO ASSY DRG	NAME	SIGN	DATE
BCE	421	N.T.S.				H.L.	Sd.	13-11-85
						R.K.A.	Sd.	14-11-86

BHARAT HEAVY ELECTRICALS LIMITED
BHOPAL

CARD 37 DRAWING NO 05380101012

BCE-3-1064